

Instructions for
building
APEX SHED

TOOLS AND FIXINGS

Supplied:

Screws

Roof felt tacks

Nails

Recommended:

Spirit level

Drill Driver

Hammer

Stanley knife

Mastic gun

Silicone sealant

Beading tacks

TOOLS AND FIXINGS

If you have a window to fit you should have the following :

- 1 No Pane of glass cut to correct size
- 4 No Window beading pieces
- 12 No Beading tacks

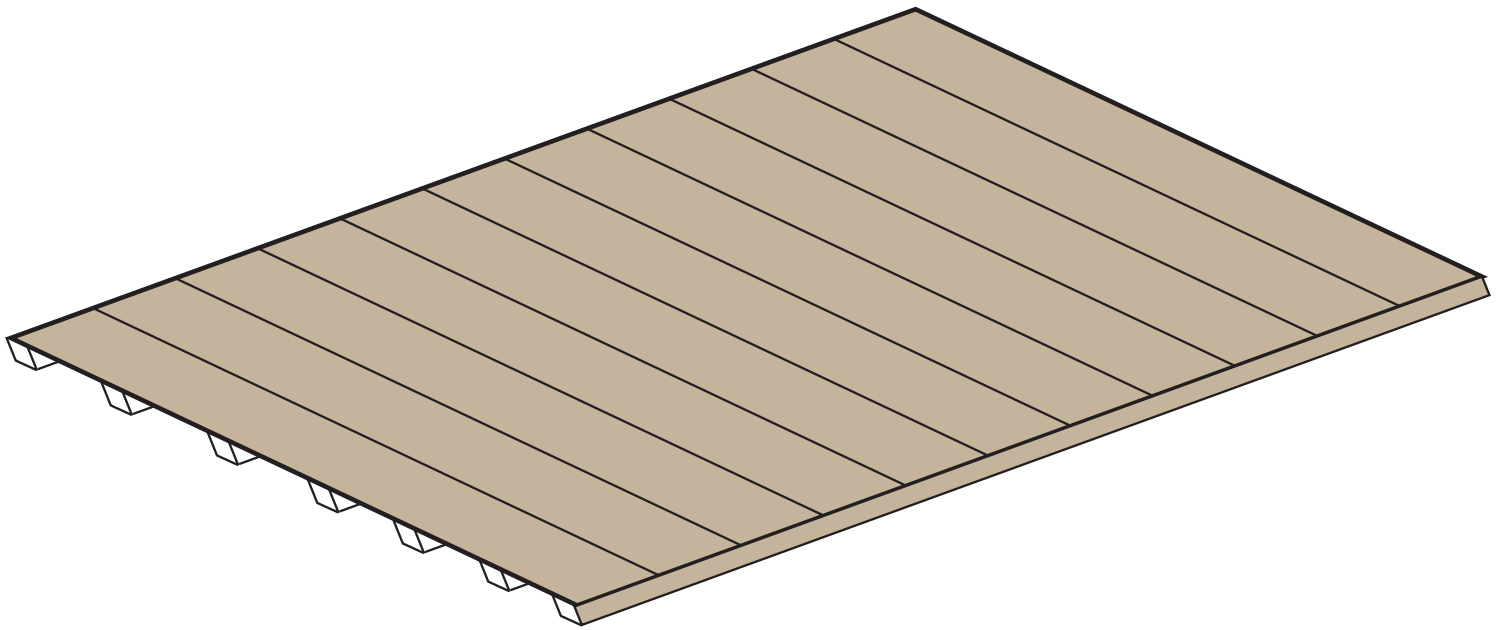
You also need a tube of clear silicone sealant.

Make sure the glass is clean and dry.

Using a mastic gun apply a continuous line of sealant to the inside of the window recess, making sure there are no gaps in the sealant.

Fit the glass in and gently press evenly all the way round to make a good seal.

When fitting the beading make sure you put the two longer pieces in first at opposite sides, tack each piece down as you go, then fit the shorter pieces in at the top and bottom.

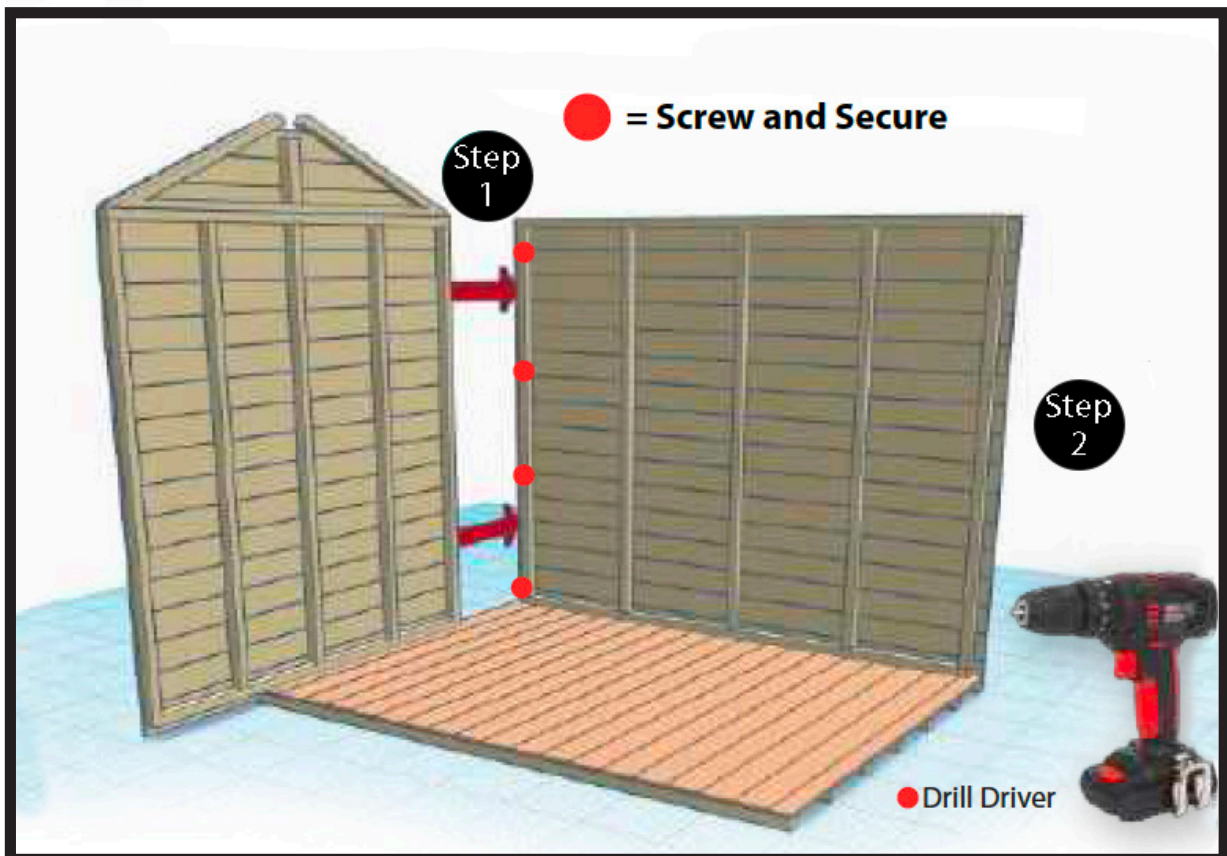


Place the base down making sure it is level and sturdy.

STEP 1

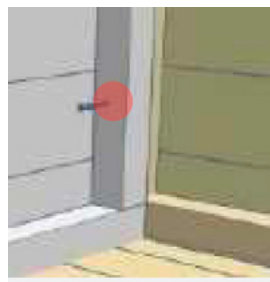
Stand the side panel with the overhang to the bottom and flush with the front base.

Make sure the high end is to the front.



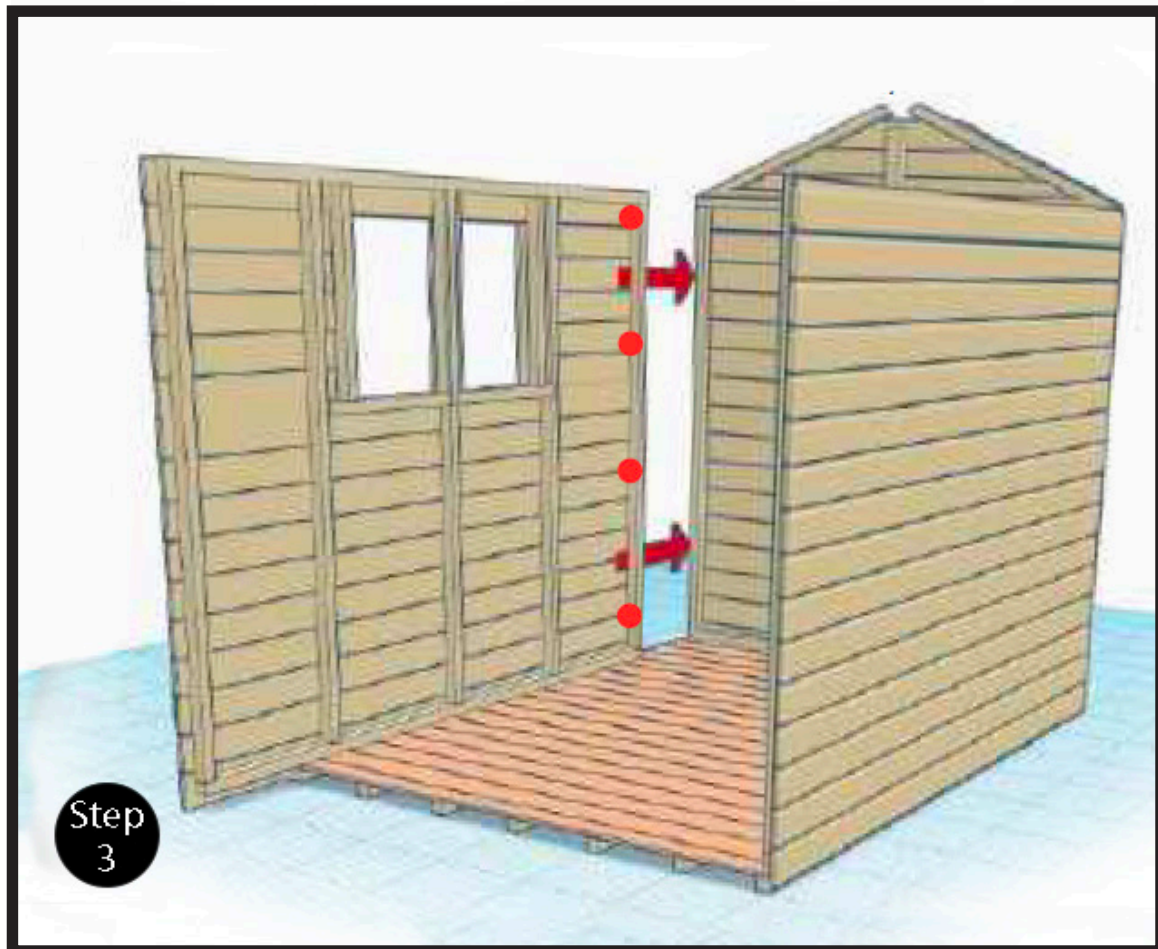
STEP 2

Stand the back panel on the base and slide to the corner to engage the supports. Screw together from the inside.



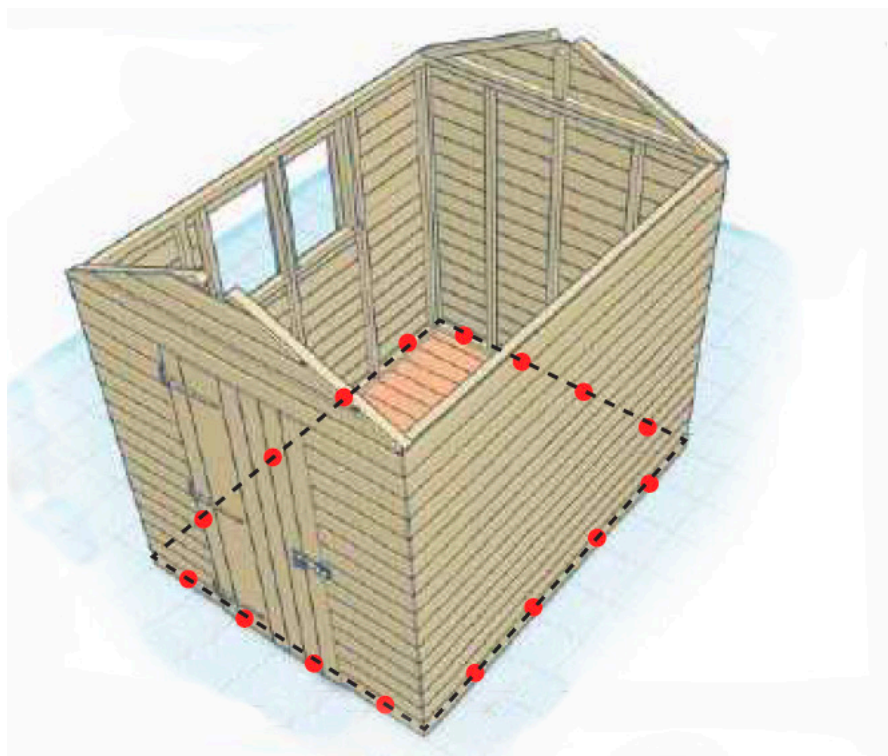
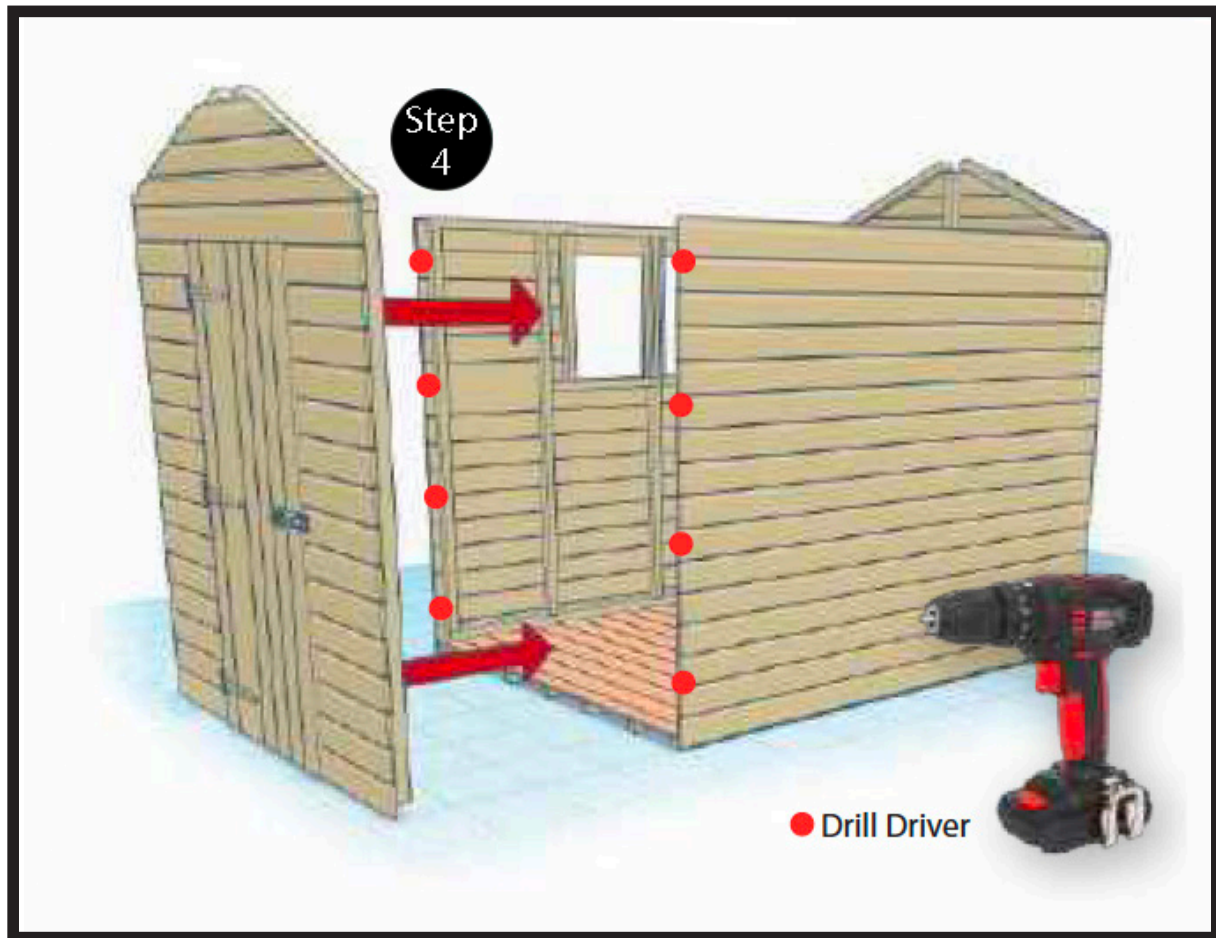
STEP 3

Stand the other side panel in the same way and screw together to the back panel from the inside.



STEP 4

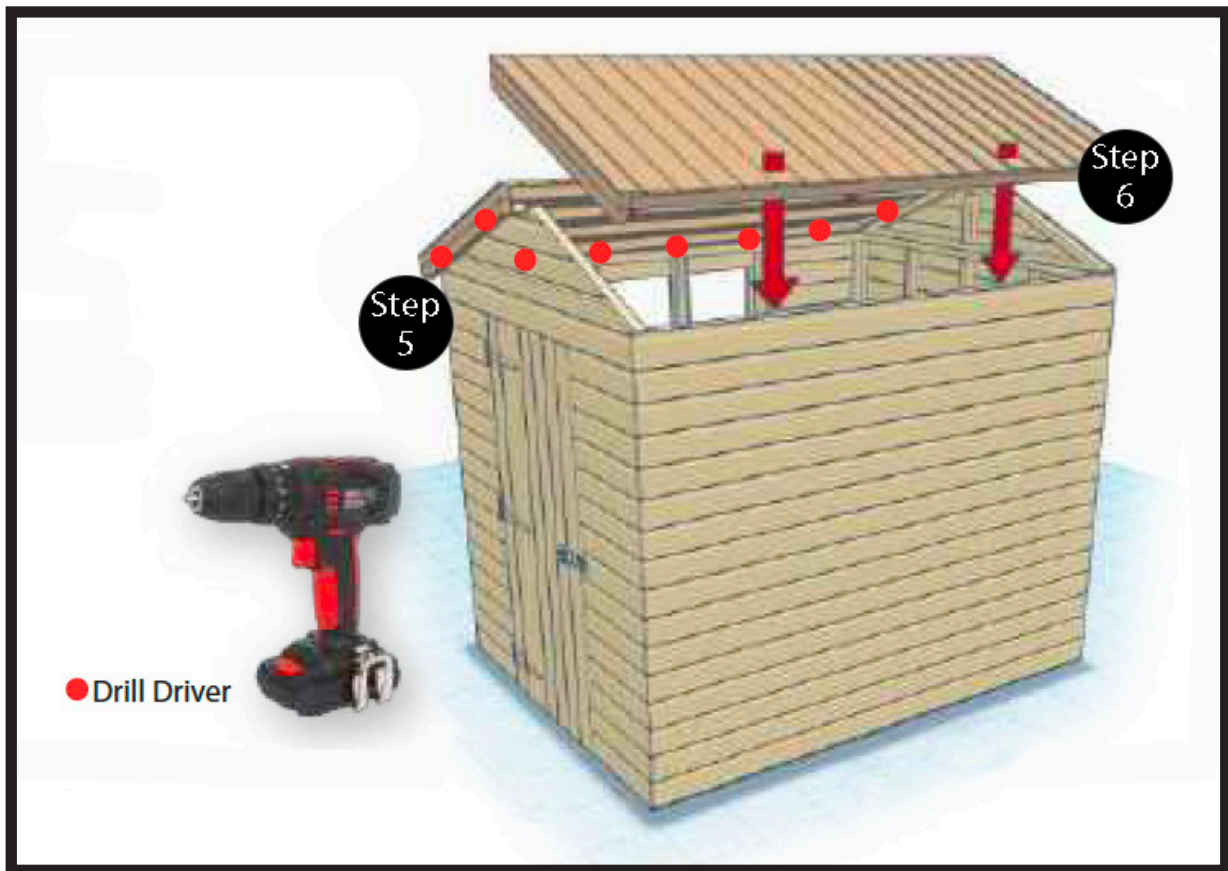
Stand the front panel onto the base and screw to the side panels from the inside.



STEP 5

Fit the roof panel, making sure there is an equal overhang at the front and the back.

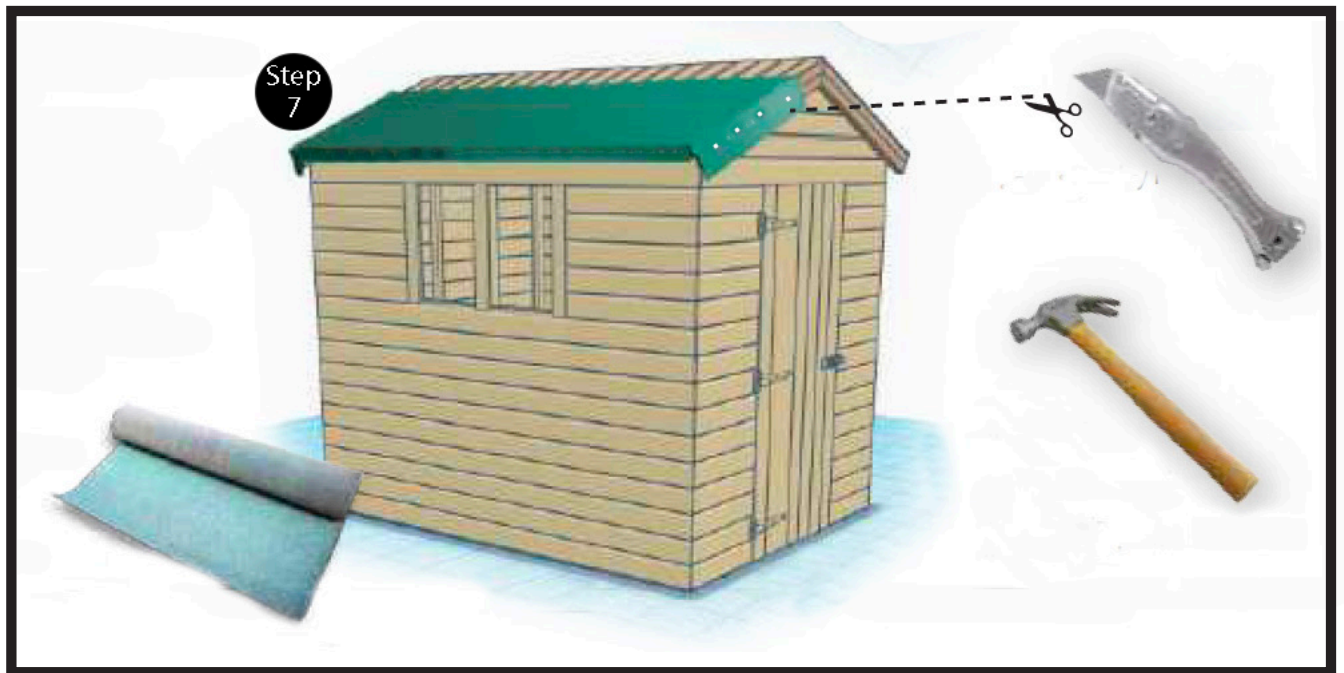
Screw from the inside up into the roof supports on the front and back panels.



STEP 6

Once the roof is attached proceed to felt, starting at the lowest end working up to the highest end. Make sure the felt pieces overlap each other by at least 6" and the edges by 2".

Clout nails should be used on the joins about every 600mm.



STEP 7

Nail on the 2 side fascia boards followed by the front fascia board.
Nail on the two corner trims onto each corner

